

**TITLE:**

USC2 1pr Unscreened LSZH

CODE:

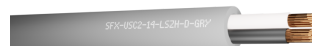
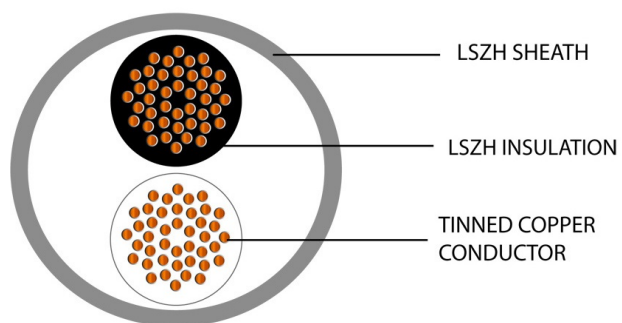
SFX/USC2-14-LSZH-D-GRY-1

DESCRIPTION:

1m (per metre) USC2-14 1pr 14AWG
Unscreened 600V Grey LSZH (8473)

SUPPLIED AS:

Per 1m Lengths





Product Specification

Cable Construction

Cable Construction	2 Cores
CPR	Dca -s:2 -a:1 -d:2
Conductor	Tinned Copper
Conductor Diameter (mm)	0.3 ±0.008 x 42(2.08mm ²)
Overall Diameter (mm)	9.00 ±0.20

Insulation

Insulation	LSZH
Insulation Colour	Black, White
Insulation Resistance @20°C	>200MO/km
Insulation Thickness (mm)	0.80

Outer/Jacket Specification

Jacket	LSZH
Overall Colour	Grey
Overall Diameter (mm)	9.00 ±0.20
Jacket Colour	Grey RAL 7042
Jacket Thickness (mm)	1.00 ±0.20

Electrical Characteristics

Insulation Resistance @20°C	>200MO/km
Max Conductor DC resistance @ 20°C	9.50O/km
Rated Temperature (°C)	-40°C to 70°C
Rated Voltage (V)	600V





**BELDEN
EQUIVALENTS**

Securi-Flex®

MORE INFORMATION:

Sorry, no more information is available for this product

Belden equivalents



enquiries@securiflex.co.uk | www.securiflex.co.uk | 03333 44 66 23

TERMS AND CONDITIONS APPLY - WHILE EVERY EFFORT HAS BEEN MADE TO ENSURE THE ACCURACY AND COMPLETENESS OF THE INFORMATION, NO GUARANTEE IS GIVEN NOR RESPONSIBILITY TAKEN FOR ERRORS OR OMISSIONS IN THIS DATA SHEET.

FLAME-FLEX®

Drum-Roll

LUCKINS®

apim
accredited provider

**ELECTRICAL
DISTRIBUTORS
ASSOCIATION**

BASEC
MEMBER

KNX
MEMBER

cai
MEMBER

CPA
MEMBER

**UK
CA**